



# 16 MM BORE STAINLESS STEEL METRIC CYLINDER

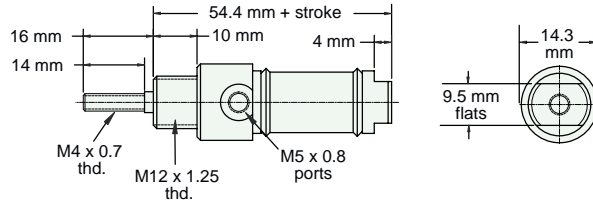
## M-SDR-10-□-□

Double Acting

**NEW!**



**Mount:** Stud      **Standard Stroke Lengths:** 10 mm, 25 mm, 40 mm, 50 mm, 80 mm, 100 mm, 125 mm, 160 mm  
**Type:** Rotating Rod  
**Options:** B, V



Nut included, but not shown on drawing

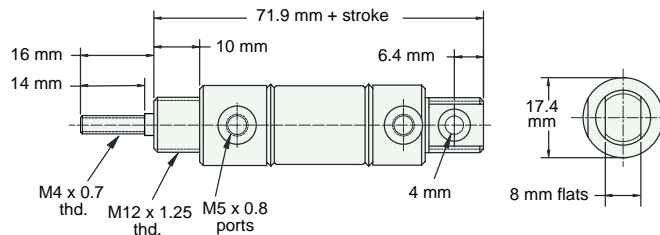
## M-UDR-10-□-□

Double Acting

**NEW!**



**Mount:** Universal      **Standard Stroke Lengths:** 10 mm, 25 mm, 40 mm, 50 mm, 80 mm, 100 mm, 125 mm, 160 mm  
**Type:** Rotating Rod  
**Options:** B, V      Mounting nuts not included. Part No. NM12-125 may be ordered separately.



Furnished without nut(s). Order Part No. NM12-125.

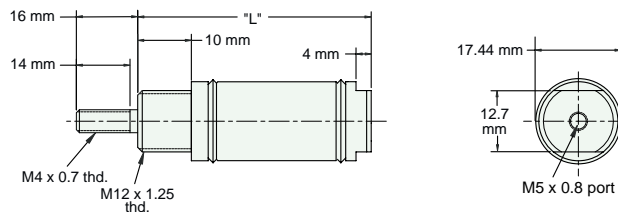
## M-SSR-10-□-□

Single Acting

**NEW!**



**Mount:** Stud      **Standard Stroke Lengths:** 10 mm, 25 mm, 40 mm, 50 mm, 80 mm, 100 mm, 125 mm, 160 mm  
**Type:** Rotating Rod  
**Options:** B, V



Nut included, but not shown on drawing

"L" (mm) for Standard Strokes								
Stroke	10	25	40	50	80	100	125	160
	56	83	120	130	193	224	260	329

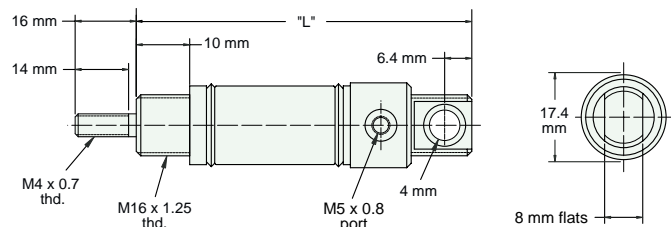
## M-USR-10-□-□

Single Acting

**NEW!**



**Mount:** Universal      **Standard Stroke Lengths:** 10 mm, 25 mm, 40 mm, 50 mm, 80 mm, 100 mm, 125 mm, 160 mm  
**Type:** Rotating Rod  
**Options:** B, V



Furnished without nut(s). Order Part No. NM12-125.

"L" (mm) for Standard Strokes								
Stroke	10	25	40	50	80	100	125	160
	73	100	137	141	210	241	278	346